



**AISBERG**



*for* **FISH & SEAFOOD**



# DIAGONAL

Diagonal refrigerated counters with stainless steel exposition surface for salted and smoked fish





# DIAGONAL

Refrigeration cabinets line in Diagonal design with an ergonomic frontal glass configuration – a convenient shelf for products transfer to the buyer





# DIAGONAL

Diagonal refrigerated counters with stepped exposition surface for salted and smoked fish



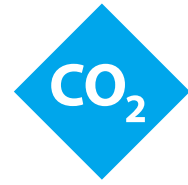


# DIAGONAL

Diagonal cabinets island for fish sale







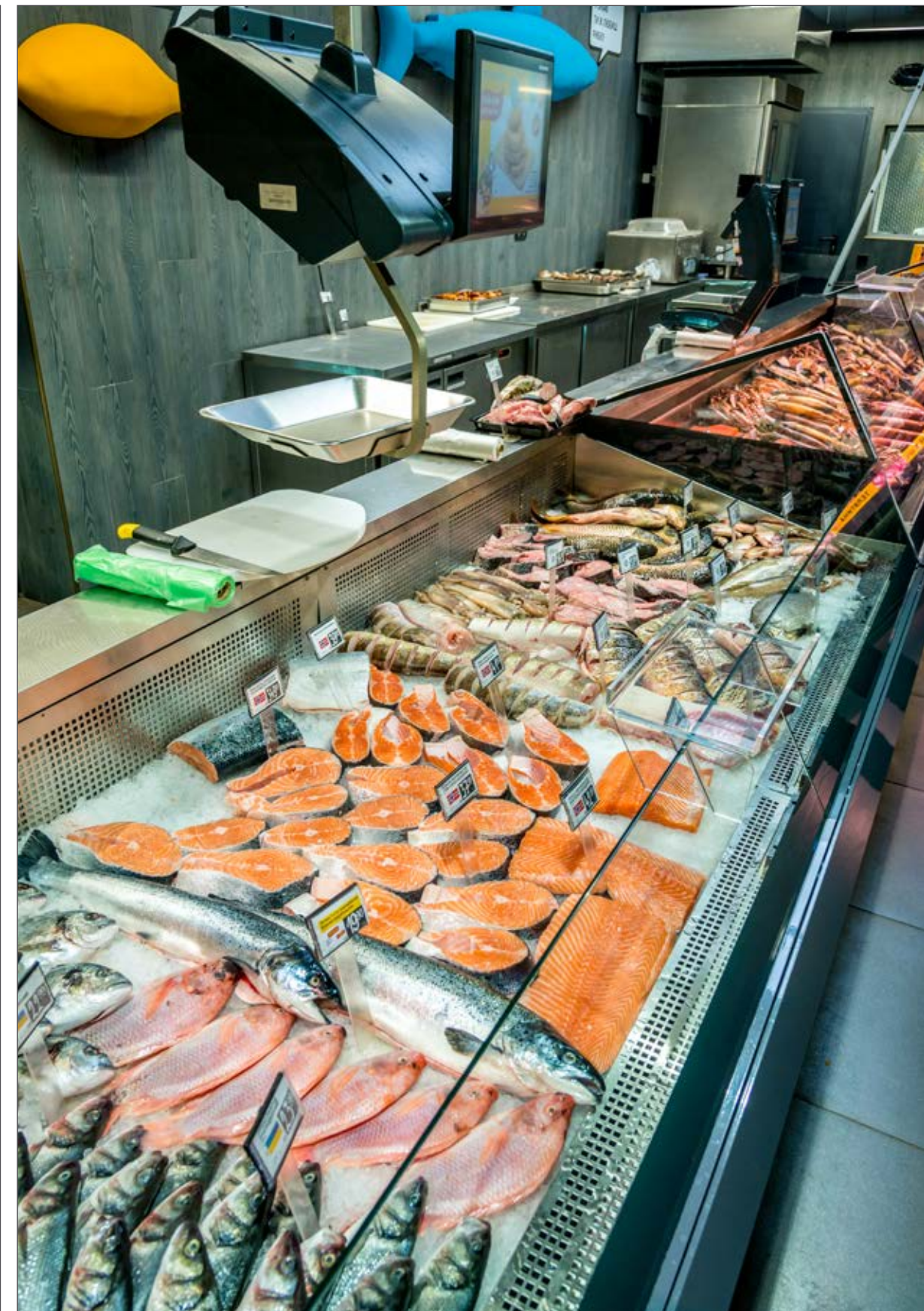
All Diagonal refrigeration cabinets are adapted to work on CO2 refrigerant in a centralized cooling system





# DIAGONAL FISH

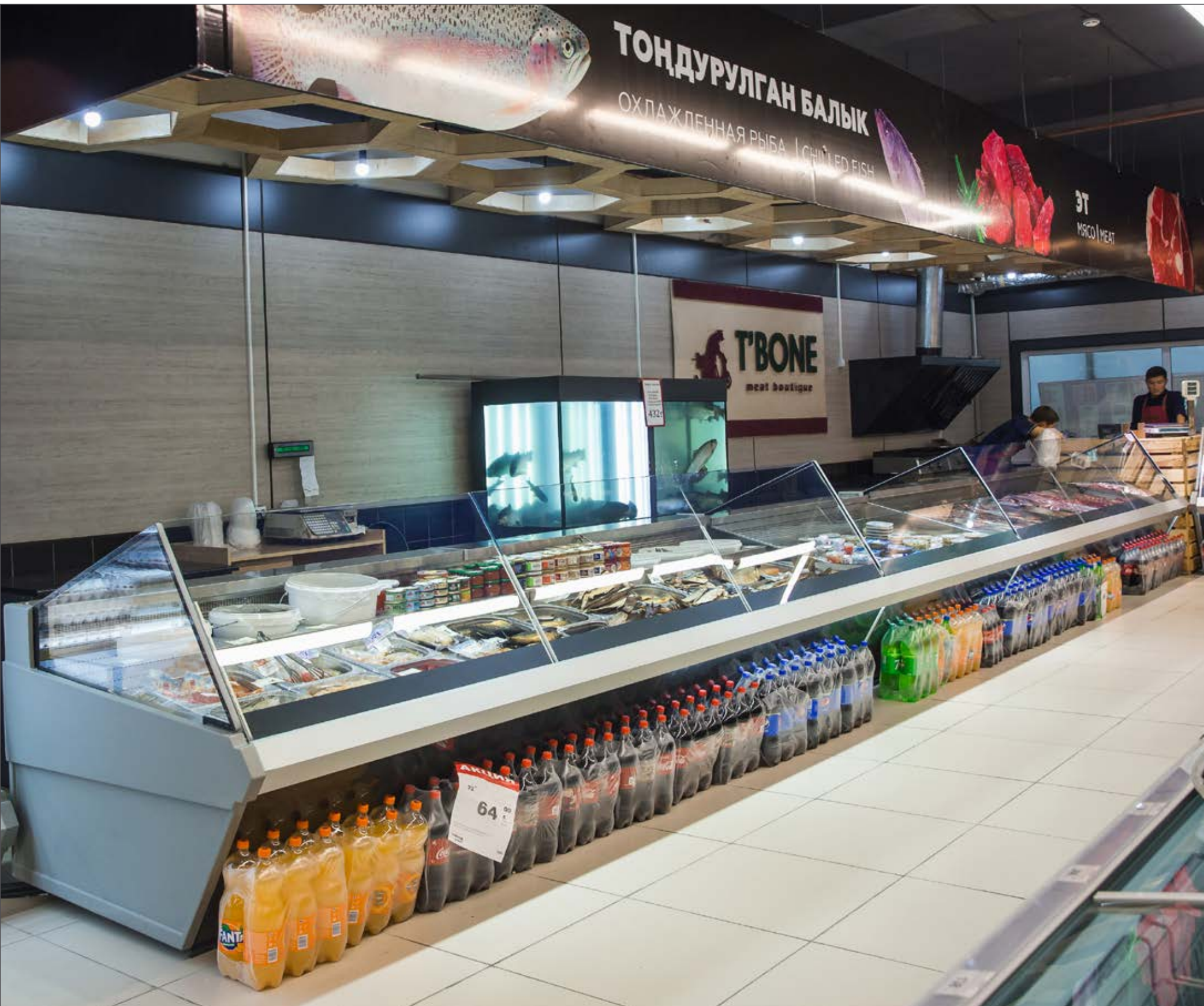
Medium-temperature module for smoked and salted fish unites in one line with the cabinet for fish-on-ice sale in Diagonal design





# DIAGONAL

Diagonal refrigerated counters with stainless steel stepped exposition surface for salted and smoked fish.  
The glasses equipped with a heating system





# DIAGONAL

Diagonal refrigerated counters with stainless steel exposition surface for salted and smoked fish





# DIAGONAL FISH

Line of refrigerated counters in Diagonal design for fish department of hypermarket consists of units for the sale of fresh fish on ice, counter with stainless steel surface for customers service and strengthened pedestals for aquariums with live fish





# DIAGONAL FISH

Medium-temperature module for smoked and salted fish units in one line with the cabinet for fish-on-ice sale in Diagonal design





# CASPIY DIAGONAL

Semi-vertical refrigerated cabinet Caspiy Diagonal with wide exposition made of stainless steel with high base used for the sale of packed seafood, preserves and fish in self-service mode





# CASPIY DIAGONAL

Semi-vertical refrigerated cabinet Caspiy Diagonal with wide exposition made of stainless steel with high base used for the sale of packed seafood, preserves and fish in self-service mode





# CASPIY DIAGONAL

Semi-vertical refrigerated cabinet Caspiy Diagonal with wide exposition with high base used for the sale of packed seafood, preserves and fish in self-service mode





# CUBE

Refrigeration cabinet Cube Fish with 90 corner element and 0/+1°C temperature regime for fish on ice installed in one line with refrigeration cabinet Cube Caspiy for smoked and salted fish sale in self service mode. Cabinets layout made of stainless steel





# CUBE

Refrigerated counters Cube with panoramic glass give customers a full view of product layout from any angle.  
Cylindrical corner cooled module in 90° angle





# CUBE

Refrigerated counters Cube with panoramic glass give customers a full view of product layout from any angle.  
Low-temperature cabinet Cube BT with temperature mode  $-8/-6\text{ }^{\circ}\text{C}$  for the sale of caviar are built into the line of Cube counters with high glass





# CUBE

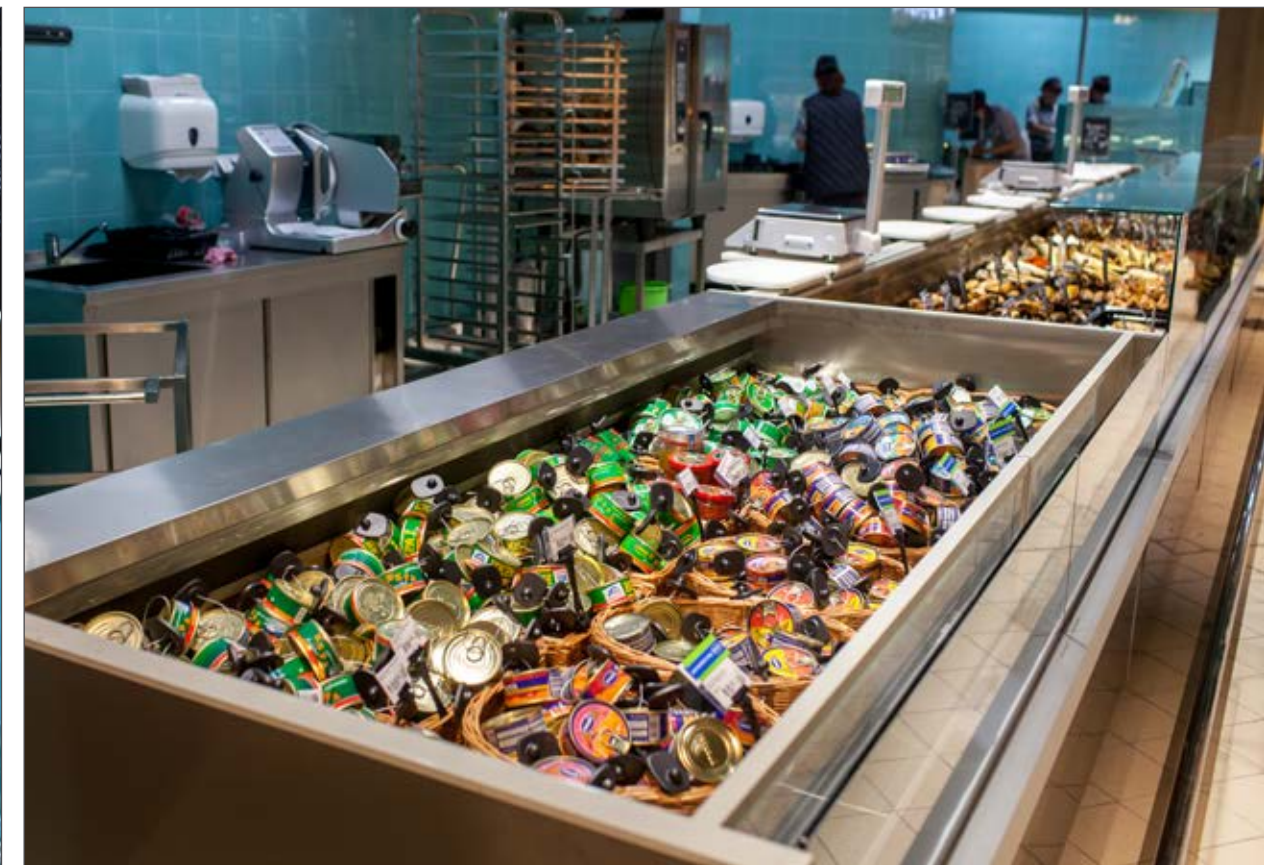
Line of refrigerated counters in Cube design for fish department of supermarket consists of units for the sale of fish on ice, positive temperature counter for smoked and salted fish and strengthened pedestals for aquariums with live fish in the same design





# CUBE

Refrigerated counters Cube with panoramic glass give customers a full view of product layout from any angle.  
Low-temperature cabinet Cube BT with temperature mode -8/-6 °C for the sale of caviar are built into the line of Cube counters with high glass





# CUBE FISH

Specialized design of Cube Fish counter for the sale of fish on ice includes hermetic exposition surface of stainless steel and vertical placement of the evaporator to prevent it from corrosion





# CUBE BT

Line of refrigerated counters Cube with corner neutral module in 45° angle





# CUBE FISH

Specialized design of Cube Fish counter for the sale of fish on ice includes hermetic exposition surface of stainless steel and vertical placement of the evaporator to prevent it from corrosion





# CUBE BT

Refrigerated counter Cube BT is used for the sale of weighted frozen products with help of seller





# CUBE & CASPIY CUBE

Unit for the sale of fish on ice, positive-temperature unit with high glass for smoked and salted fish and semi-vertical cabinet Caspiy Cube for sale of fish preserves in self-service mode are integrated in one line of refrigerated counters in Cube design and finishing of laminated chipboard





# CASPIY CUBE

Refrigerated cabinet Caspiy Cube is integrated into the line Cube counters and provides sale of packed fish and fish preserves in self-service mode





# CUBE

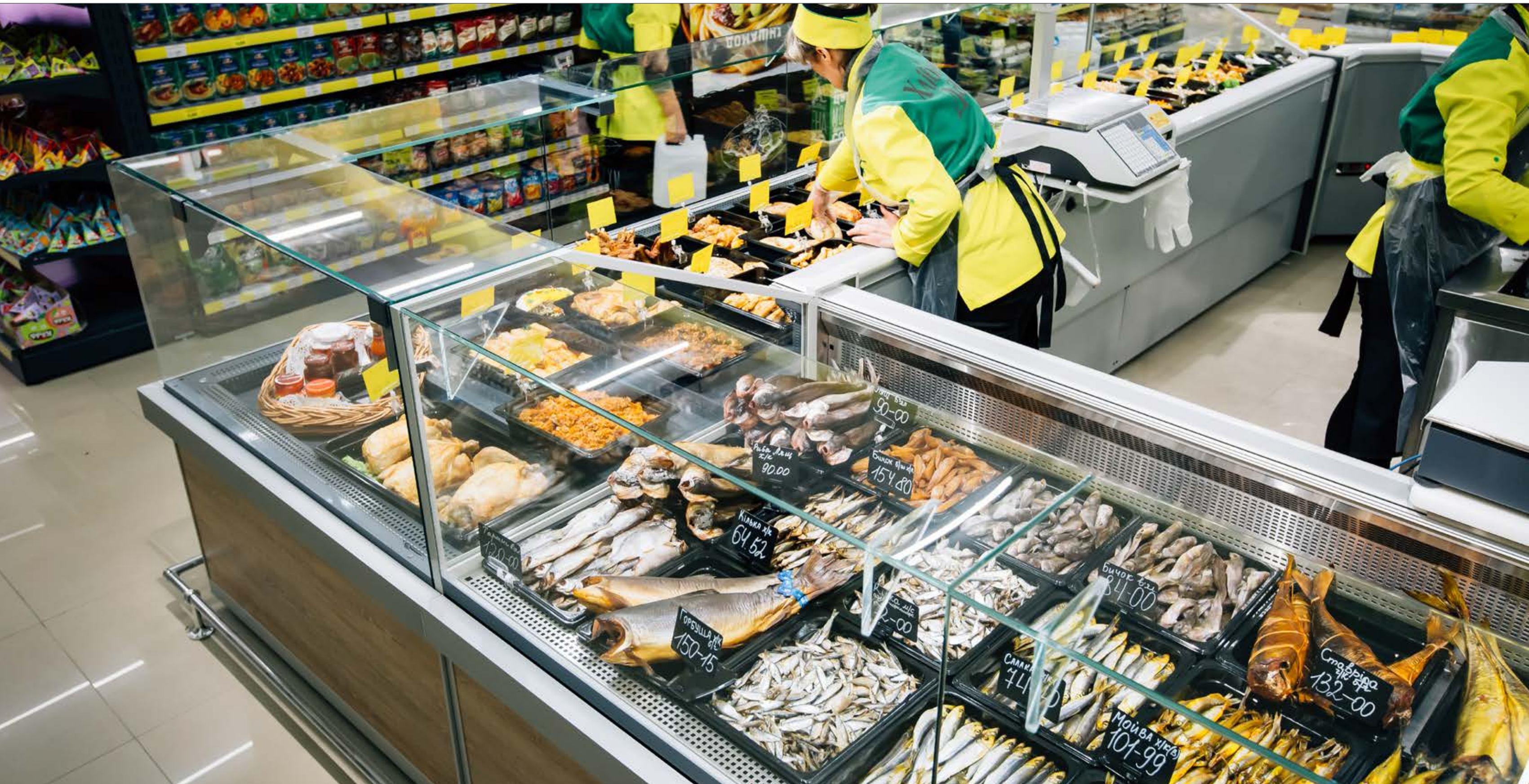
Island combination of refrigerated counters Cube in the center of supermarket trading hall.  
Straight cooled corner unit in 90° angle is applied





# CUBE

Island combination of refrigerated counters Cube in the center of supermarket trading hall.  
Straight cooled corner unit in 90° angle is applied





# CUBE

Island combination of refrigerated counters Cube in the center of supermarket trading hall





# ELLIPSE

Effective island combination of refrigerated counters Ellipse in the center of supermarket trading hall. Unit Ellipse Fish for the sale of fresh fish on ice and unit Caspiy Ellipse for the sale of fish products in self-service mode are installed into the line of counters for the sale of smoked and salted fish





# ELLIPSE FISH & ELLIPSE BT

Effective combination of refrigerated counters Ellipse Fish for the sale of fish on ice and Ellipse BT for the sale of frozen seafood and fish





# ELLIPSE

Low-temperature cabinet Ellipse BT with temperature mode -8/-6 °C for the sale of caviar is integrated in the line of refrigerated counters Ellipse





# ELLIPSE

Line of refrigerated counters Ellipse with exposition of stainless steel for the sale of fish





# ELLIPSE SELF

Line of refrigerated counters Ellipse Self with exposition of stainless steel for the sale of fish





# CASPIY ELLIPSE SFERA

Compact counter Caspiy Ellipse with spherical corner modules provide the most efficient use of trade space in small store





# ELLIPSE

Line of refrigerated counters Ellipse in design «on foot» is installed in trading hall of supermarket for the sale of fish





# BUTTERFLY

One of units in island of refrigerated cabinets Butterfly is used for the exposition of preserves and sliced fish





# BUTTERFLY

Semi-vertical refrigerated cabinet Butterfly is used for the exposition of preserves and sliced fish





# BUTTERFLY

Refrigerated cabinet Butterfly with curved glass doors and LED lighting for the sale of caviar is installed in fish department of supermarket





# BUTTERFLY CUBE

Line of semi-vertical refrigerated cabinets Butterfly Cube for the sale of fish products and dried fish in a self-service mode





# BUTTERFLY CUBE

Line of semi-vertical refrigerated cabinets Butterfly Cube for the sale of fish products and dried fish in self-service mode





# MEDUSA CUBE COMFORT

Energy saving multi-deck Comfort Cube with anti corrosion facing made of stainless steel for preserves sale













# MEDUSA CUBE

Refrigerated cabinet Medusa Cube with finishing of wood polymer coating and inner painting in black colour





# MEDUSA CUBE

Line of energy-saving refrigerated cabinets Medusa Cube includes several modules for the sale of different products, separated by hermetic panoramic partitions, including for the sale of preserves





# MEDUSA CUBE

Line of refrigerated cabinets Medusa Cube  
with energy saving glass doors





# MEDUSA CUBE

Line of refrigerated cabinets Medusa Cube  
with energy saving thin panoramic doors





# MEDUSA CUBE

Line of refrigerated cabinets Medusa Cube with energy saving glass sliding doors





# DISPLAY

Low-temperature cabinet Display is designed for sales of frozen products in self-service mode. Cabinet construction allows to maintain the temperature -20/-18 °C





# DISPLAY

Low-temperature cabinet Display is designed for sales of frozen products in self-service mode. Cabinet construction allows to maintain the temperature -20/-18 °C





# NAUTILUS

Low-temperature Nautilus cabinet with panoramic glazing provides the best demonstration and visibility of frozen products









# NAUTILUS

Low-temperature Nautilus cabinet with panoramic glazing provides the best demonstration and visibility of frozen products and energy saving glass covers





# NAUTILUS

Low-temperature Nautilus cabinet with panoramic glazing provides the best demonstration and visibility of frozen products





# NAUTILUS

Low-temperature cabinets Nautilus in multi-deck design with energy saving glass covers





# NAUTILUS COMBI

Fish sale department in convenience store: Nautilus and Nautilus Combi freezers for frozen fish, Medusa Cube multi deck for preserves and packaged smoked fish sale, refrigeration cabinet Cube Fish with 0/+1°C temperature regime for fish on ice sale





# NAUTILUS COMBI

Combined low-temperature cabinets Nautilus Combi with two autonomous cooled volumes provide efficient storage of frozen food, temperature stability, improved performance in energy saving and convenient use





# NAUTILUS COMBI

Combined low-temperature cabinets Nautilus Combi with two autonomous cooled volumes provide efficient storage of frozen food, temperature stability, improved performance in energy saving and convenient use





# NAUTILUS COMBI

Combined low-temperature cabinets Nautilus Combi with two autonomous cooled volumes provide efficient storage of frozen food, temperature stability, improved performance in energy saving and convenient use





# NAUTILUS COMBI

Combined low-temperature cabinets Nautilus Combi have two autonomous cooled volumes. One of them can be set on positive temperature and another one – on low temperature for the sale of frozen products





# NAUTILUS

Low-temperature Nautilus cabinets with panoramic glazing and inner LED lighting of volume ensures the best demonstration and visibility of frozen products





# COLD ROOMS AND AIR COOLERS

Güntner air coolers for fish preparation refrigeration department







**MANY THANKS TO ALL OUR CLIENTS  
FOR COOPERATION**

**WWW.AISBERG.COM**

SINCE **1989**



**«AISBERG» LTD**  
3, OVIDIOPOLSKA DOROGA,  
ODESA, 65036, UKRAINE  
+38 (0482) 32-35-27  
aisberg@aisberg.od.ua